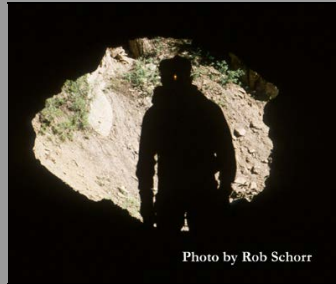


## COLORADO BAT WORKING GROUP



### [About CBWG](#)

### [Bats of Colorado](#)

### [CO Bat Conservation Plan](#)

### [Management and Conservation](#)

### [CO Bat Matrix](#)

### [Links](#)

### [CBWG HOME](#)

# The Colorado Bat Matrix

## A tool for identifying and evaluating potential threats to Colorado's bat populations

While revising the Colorado Bat Plan, we identified the need for a stand-alone, readily-accessible, reference tool that identified and ranked potential threats to Colorado bat species.

The matrix can be queried by bat species or threat at the [search page](#).

A brief description of our methods can be found at the [methods page](#).

We presented a [poster](#) at the 2010 NASBR meeting that briefly explains our methods and provides an example using *Corynorhinus townsendii*.

[Search Matrix](#)

[Poster](#)

[Contact Rob Schorr](#) | [CSU Disclaimer](#) | [CSU Equal Opportunity](#) | [CSU Privacy Statement](#)



Knowledge to Go Places

Website sponsored by:

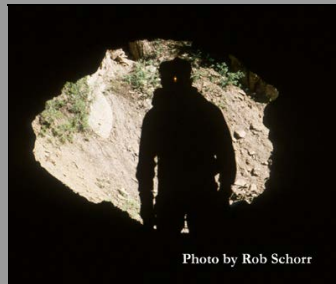
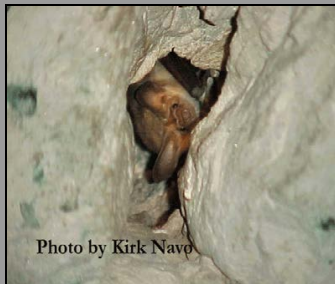
[Colorado Natural Heritage Program](#)

[Colorado State University](#), Fort Collins, CO 80523 USA

Last modified December 7, 2010



# COLORADO BAT WORKING GROUP



## Renewed Uranium Mining

[About CBWG](#)

[Bats of Colorado](#)

[CO Bat Conservation Plan](#)

[Management and Conservation](#)

[CO Bat Matrix](#)

[Links](#)

[CBWG HOME](#)

Bat Species	Rank
<i>Corynorhinus townsendii</i>	B
<i>Eptesicus fuscus</i>	H
<i>Lasiurus cinereus</i>	H
<i>Myotis thysanodes</i>	E
<i>Tadarida brasiliensis</i>	H
<i>Myotis lucifugus</i>	G
<i>Myotis evotis</i>	G
<i>Myotis yumanensis</i>	H
<i>Myotis ciliolabrum</i>	G
<i>Lasiurus borealis</i>	H
<i>Myotis californicus</i>	G
<i>Myotis volans</i>	G
<i>Lasionycteris noctivagans</i>	H
<i>Pipistrellus hesperus</i>	H
<i>Pipistrellus subflavus</i>	H
<i>Euderma maculatum</i>	H
<i>Antrozous pallidus</i>	H
<i>Nyctinomops macrotis</i>	H

	A =	Substantial, imminent threat
	B =	Moderate and imminent threat
	C =	Substantial, non-imminent threat
	D =	Moderate, non-imminent threat
	E =	Localized substantial threat
	F =	Widespread, low-severity threat
	G =	Slightly threatened
	H =	Unthreatened

[Back to Search Page](#)

[Contact Rob Schorr](#) | [CSU Disclaimer](#) | [CSU Equal Opportunity](#) | [CSU Privacy Statement](#)



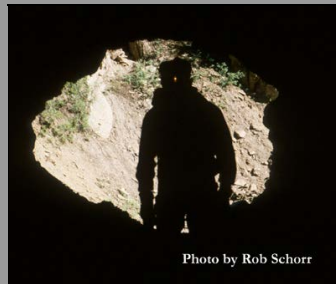
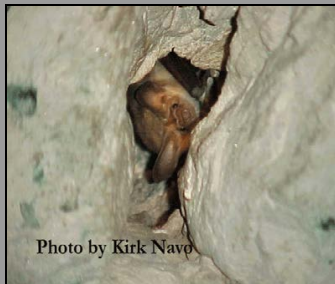
Website sponsored by:

[Colorado Natural Heritage Program](#)

[Colorado State University](#), Fort Collins, CO 80523 USA

Last modified December 7, 2010

# COLORADO BAT WORKING GROUP



## AML Closure Programs

About CBWG

Bats of Colorado

CO Bat Conservation Plan

Management and Conservation

CO Bat Matrix

Links

CBWG HOME

Bat Species	Rank
Corynorhinus townsendii	A
Eptesicus fuscus	H
Lasiurus cinereus	H
Myotis thysanodes	B
Tadarida brasiliensis	H
Myotis lucifugus	G
Myotis evotis	E
Myotis yumanensis	G
Myotis ciliolabrum	E
Lasiurus borealis	H
Myotis californicus	E
Myotis volans	E
Lasionycteris noctivagans	H
Pipistrellus hesperus	G
Pipistrellus subflavus	G
Euderma maculatum	H
Antrozous pallidus	H
Nyctinomops macrotis	H

	A =	Substantial, imminent threat
	B =	Moderate and imminent threat
	C =	Substantial, non-imminent threat
	D =	Moderate, non-imminent threat
	E =	Localized substantial threat
	F =	Widespread, low-severity threat
	G =	Slightly threatened
	H =	Unthreatened

[Back to Search Page](#)

[Contact Rob Schorr](#) | [CSU Disclaimer](#) | [CSU Equal Opportunity](#) | [CSU Privacy Statement](#)



*Knowledge to Go Places*

Website sponsored by:

[Colorado Natural Heritage Program](#)

[Colorado State University](#), Fort Collins, CO 80523 USA

Last modified December 7, 2010