

*Ed - here's a more recent stratigraphic chart of Paradox Basin (late 1970s)*

### CORRELATION CHART - - PARADOX BASIN AND VICINITY

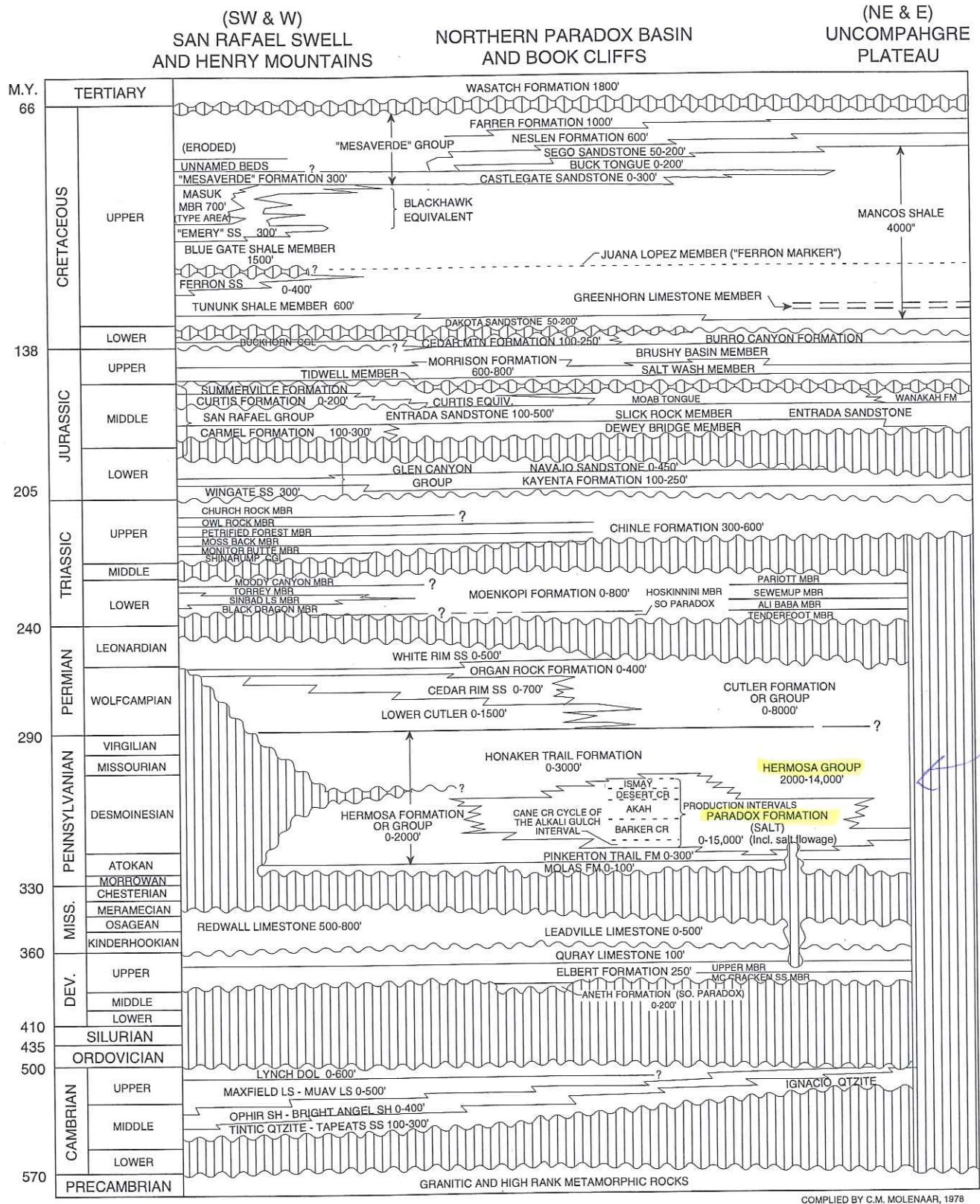


Figure 3. Correlation chart for rocks of the Paradox Basin and vicinity. Modified from Molenaar (1987).

cycle of the Alkali Gulch interval was performed using Rock-Eval pyrolysis analysis (Nuccio and Condon, in press). Rock-Eval pyrolysis is used to evaluate rapidly

the petroleum generation potential of rocks and it provides information on the quantity, type, and thermal maturity of the organic matter in a rock. Complete